



KITCHEN
INSPIRATION

keller



WELCOME TO KELLER KITCHENS

You are looking for a new kitchen, and because you don't buy a new kitchen every day, it is important to orientate yourself well and discover what best suits your personal taste and lifestyle.

Inspiration!

Inspiration is an important step to your personal kitchen and perhaps the most fun part! In this brochure we offer you kitchen inspiration in four interior styles according to the latest trends. You will find the materials and colours used in every kitchen, and we show alternatives for a different taste or price tag.

Four steps to your personal kitchen

What suits you is the sum of different elements; favourite interior style, trends, personal touch and your budget. This results in your personal kitchen in four steps. On page 6 you can find more details and useful tips.

Beautiful on the outside and inside

Our kitchens are not only beautiful on the outside, but also on the inside. At the back of the brochure you can find out about our different kitchen materials and finishes.

We also tell you more about what makes Keller kitchens unique and give you information about worktops, (built-in) appliances and accessories.

Sustainability

Sustainability is important to us and we take this into account in all the choices we make. We do not only offer kitchens that are beautiful, but they are also produced with attention to people and the environment. On our 'sustainability' page you can read more about our goals and certifications.

The next step

When you are ready for the next step after reading this brochure, we cordially invite you to visit one of our Keller kitchen specialists where friendly, professional advisers help you make choices and realise your personal kitchen together with you.

There is always a Keller kitchen that suits you!

Sincerely,

The Keller Team.

INDEX

WELCOME

Four steps to your personal kitchen 6
The Keller kitchen specialists 8

KITCHEN INSPIRATION

Interior style **MODERN**

Perfect Sense 14
City Chic 16
Northern Nature 18
Black Marble 20
Pure Basic 22
Terracotta Dreaming 24
Geo Graphic 26
Arctic Blue 28
Urban Blush 30
Pebble Beach 32
Matt Black 34

Interior style **CLASSIC**

Marbling Moods 40
Glam Chic 42
Sturdy Classic 44
Bliss Boutique 46
Raw Nature 48

Interior style **COUNTRY**

Cottage Life 54
Smokey Wood 56
Botanic Vintage 58
Modern Farmhouse 60
Black Cottage 62
Dutch Prestige 64
Oak Aged 66
Natural Basic 68
Wood Works 70

Interior style **INDUSTRIAL**

Dark Rituals 76
Brooklyn Brick 78
Rock Solid 80
Black Metal 82
Concrete Jungle 84

KITCHEN INFORMATION

Made in Holland 86
Beautiful on the outside 88
Beautiful on the inside 92
Choices in colour 96
Materials, finishes and price indicator 100
Worktops 100
Appliances and accessories 102
Sustainability 104
Factory 106
History 108



WATCH OUR
KITCHENS ONLINE





4 STEPS TO YOUR PERSONAL KITCHEN

What exactly is a personal kitchen? What you regard as being beautiful is a sum of different elements which are your favourite interior style, trends, personal touch and your budget.

What do these elements look like to you? The mix is different for everyone. And that makes every kitchen a personal kitchen!

1. Interior style

As a start we determine the interior style you like. To make things easy, we have defined four basic styles: modern, classic, country and industrial. But often it's a mix of them. You'll find moodboards for each individual style so that you can find out your favourite one!

Tip: *Make your own mood board! Collect interior photos on the internet (Pinterest!) or from magazines, and you'll find your favourite style or mix!*

2. Trends

Trends influence what we like right now. With the interior style as a base, they inspire us to give our interior a contemporary twist. Some trends are temporary; others become classics. You choose a kitchen for years, so keep this in mind when considering trends.

Tip: *Do you like to follow the latest trends? Then opt for a kitchen in neutral or timeless colours and implement trends in the colour of walls, accessories and small furniture. This way you stay up-to-date without incurring high costs and your kitchen will never get boring.*

3. Personal touch

And then there's the personal touch. Do you like cooking or prefer 'take away'. The answer plays a role in the choice of equipment and storage space. If you like art, nature or travel, let this atmosphere be reflected in your (interior) design!

Tip: *If you have small children or a pet, choose materials that are less sensitive to scratches.*

4. Budget

Apart from that 'picture' in your head, you also have a budget. In the end, your financial situation should also allow your personal kitchen to be attainable. With our wide range of materials, details and finishes, your budget shouldn't stand in your way.

Tip: *With each kitchen, you will find options to make your kitchen more luxurious or more affordable - or both!. On page 100, you can find more information about the price range of materials and finishes.*



KELLER KITCHEN SPECIALISTS

Because we think it's important that you can discuss your personal wishes with an expert, we only sell Keller kitchens through kitchen specialists. This is where expert people will personally guide you through the process from design to the moment you start using your new kitchen. Together with you, they will realise your personal kitchen.

AT OUR DEALERS YOU CAN ALWAYS COUNT ON:

- ✓ Personal attention
- ✓ Craftmanship
- ✓ Bespoke advice
- ✓ Guidance from A to Z
- ✓ Affordable customisation
- ✓ Five-year warranty on kitchen cabinets
- ✓ Top brand appliances, accessories and worktops
- ✓ Fitting and service by craftsmen

FIND A DEALER
NEAR YOU





Interior style

MODERN

The modern interior style incorporates sleek, timeless design palettes. In addition to clean lines or a graphic interplay of lines, we are also seeing more and more round shapes these days. The interior is often minimalistic with lots of natural light.

This style has various movements, such as Scandinavian, Italian, and of course, Dutch design. In today's modern interior, we recognise the influence of Cubism, with clean lines and geometric surfaces.

The (kitchen) furniture here is sleek, with a clear function. In the modern interior, there is room for innovation, modern art and high-quality materials such as marble, aluminum, chrome, glass and smooth leather.

The basic colours are neutral and sober (think black or white), and are sometimes combined with wood. Strongly coloured accessories and/or walls and striking works of art can also be used. In the Scandinavian movement, (cool) pastel shades are featured.



Interior style
MODERN



PERFECT SENSE

This design is a bold combination of black and white, surrounded by materials in Japandi-style that add a nice and warm touch to the kitchen. It's a mix of fronts in black and white in Fenix®. Thanks to a special technology, this material is extremely matt, has a soft feel with the surprising bonus of being anti-fingerprint. In addition, micro-scratches on the surface are thermally repairable.

TRENDS Smart materials, Japandi, extremely matt
MODEL Sense
COLOUR Black Fenix and white Fenix

EYE-CATCHERS

- ✓ Tall doors from one panel
- ✓ Composite top with special edge finish
- ✓ Handle trim lighting

Why not try this?

Choose ultra-matt melamine instead of Fenix® and a laminate top for a more cost-effective option. The kitchen can also be combined with a Fenix® worktop for a beautiful tone-on-tone design.



CITY CHIC

A beautiful combination of warm oak, cool marble and trendy matt black. The marble-look worktop covers the sides of the kitchen island for a luxurious look.

TRENDS	Marble, matt finish, extra high base units
MODEL	Elba
COLOUR	Warm oak

EYE-CATCHERS

- ✓ Large, open cabinet in the colour ultra matt carbon
- ✓ Handle trims, water tap and sink in black
- ✓ Kitchen island and breakfast bar in marble-look

Why not try this?

Although there's hardly any difference from the real thing, we used a front in faux wood. For a more luxurious version choose veneer. The stone worktop in marble-look is also available in laminate. It's no less beautiful, but it is less expensive.



NORTHERN NATURE

Modern and light. Typical Scandinavian influences in this kitchen are the simplicity, the pastel green and the light wood. Handy & trendy: the USB-converter and wireless phone charger in the worktop.

TRENDS Scandi-style, pastel, gadgets
MODEL Crystal
COLOUR Silk gloss lacquer in white

EYE-CATCHERS

- ✓ Tone on tone worktop
- ✓ Island with bespoke table
- ✓ Built-in USB-converter and wireless phone charger

Why not try this?

In this example we used handleless kitchen cabinets finished in lacquer. Do you prefer a handle? We have a variety of them. And if you choose melamine instead of lacquer, it even gets more attainable



BLACK MARBLE

Timeless yet trendy. The fronts in matt white (matt lacquer in the colour snow) form a clever contrast with the top and the recess in black marble ceramic. The extra high, handleless base units with a low plinth create a sleek design.

TRENDS Marble, matt finish, extra high base units
MODEL Crystal
COLOUR Matt lacquer in the colour ice

- EYE-CATCHERS**
- ✓ Recess in black marble
 - ✓ Buffet with LED spots under the floating cabinets
 - ✓ Extra high base units and tall doors from one panel

Why not try this?

Choosing an ultra matt melamine finish is friendlier for your wallet while maintaining the unique appearance.





PURE BASIC

This kitchen combines fresh white with natural wood. Basic, yet very beautiful. The design creates a calm atmosphere and makes a room look bigger than it actually is.

TRENDS Scandi-style, natural materials, wood
MODEL Crystal
COLOUR Silk gloss lacquer in the colour ice

EYE-CATCHERS

- ✓ Scandinavian design in white
- ✓ Handle trims in stainless steel
- ✓ Natural wood for a warm touch

Why not try this?

You can save money by choosing a synthetic finish on both the doors as well as the worktop. The handle trims of this kitchen can also be lacquered in ice white.





TERRACOTTA DREAMING

Earthy colour tones like truffle, terra and (soft) pink combined with modern red copper. Also beautiful on the inside; there is a neatly arranged design drawer system.

TRENDS Natural earthy tones, wall shelves
MODEL Crystal
COLOUR Silk gloss lacquer NCS S 6005-Y80R

EYE-CATCHERS

- ✓ A combination of horizontal and vertical handle trims
- ✓ Neatly arranged drawer system in an attractive design
- ✓ Matching wall shelves instead of top units

Why not try this?

By choosing a laminate worktop instead of ceramic, you can save money. Our collection lets you have the exact same colour in a different finish. And we can even lacquer the handle trims in a different colour.





GEO GRAPHIC

This kitchen is ideal for the home chef who needs a lot of space. It's fitted with high-end, professional kitchen appliances, a ceiling ventilation unit and 3-in-1 water tap. The fronts in high gloss ice form a beautiful contrast with the black worktop.

TRENDS Graphic, geometric shapes, black & white

MODEL Elba

COLOUR High gloss ice

EYE-CATCHERS

- ✓ Handle trim in white
- ✓ Black 8 cm composite worktop
- ✓ Luxury kitchen island as a meeting spot

Why not try this?

When you choose a laminate worktop, it will lower the price of the kitchen. The same happens when you choose to fit fewer professional appliances.



ARCTIC BLUE

White as a base, surrounded by colours inspired by the Arctic. Reflections and optical illusions. Materials such as glass and chrome. A beautiful detail: the drawer cabinets have a handle trim at the top, but not at the bottom. These use push-to-open to complete the sleek, modern look.

TRENDS	Reflection, cool blue tones
MODEL	Crystal
COLOUR	High gloss lacquer in ice & silk gloss lacquer in grey blue

EYE-CATCHERS

- ✓ Cove above the worktop with LED lighting
- ✓ Handleless base units combined with Tip-on (push to open)
- ✓ Trendy chrome water tap

Why not try this?

Is blue not your colour? The fronts can also be lacquered in one of the 1,950 NCS colours. So can the handle trims.





URBAN BLUSH

This sturdy kitchen in wood and concrete look gets its warmth from the styling in red and floral print. The kitchen island is finished with an open cabinet and wine cabinet.

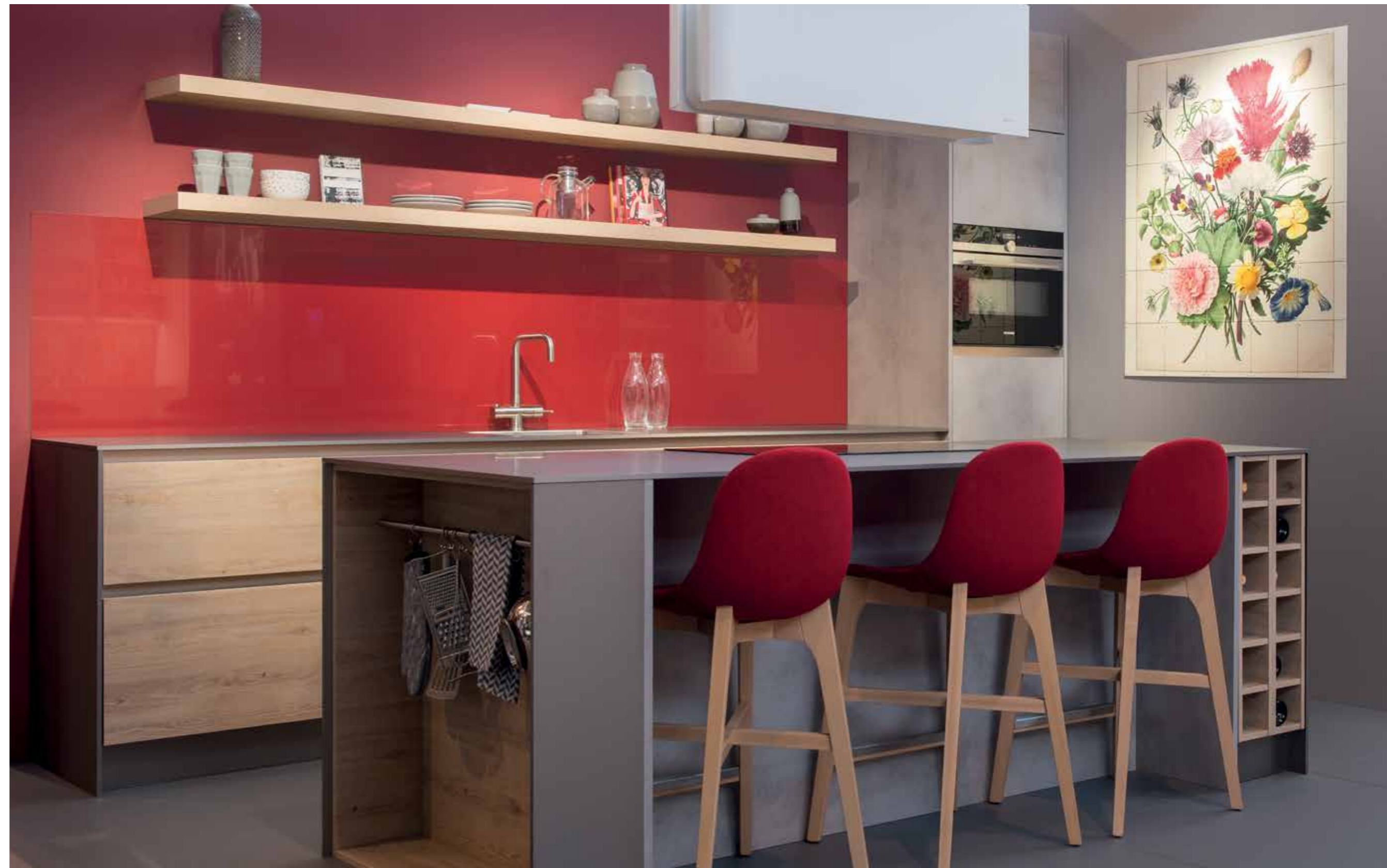
TRENDS	Concrete look, floral print
MODEL	Elba
COLOUR	Blond oak & concrete

EYE-CATCHERS

- ✓ Sturdy wood and concrete look
- ✓ Styling in warm red and trendy floral print
- ✓ Thick casing panels in front material

Why not try this?

The realistic melamine wood decor can be replaced by real veneer. It costs a bit more, but adds to the luxury. The Fenix® worktops can be replaced by laminate to balance the budget.





PEBBLE BEACH

Warm, grey and soft brown colour tones give this kitchen a modern sleek yet warm interior. Timeless and beautiful with the atmosphere of a beach house.

TRENDS Greige, thin worktop
MODEL Elba
COLOUR White

EYE-CATCHERS

- ✓ Synthetic fronts with stainless steel handle trim
- ✓ Composite thin worktop
- ✓ Styling in greige for a trendy touch

Why not try this?

Finishing the kitchen in lacquer gives it a more luxurious look, but it does cost a bit more. You can balance the budget by choosing a laminate worktop instead of a composite.





MATT BLACK

Black is on trend today, as are matt colours. By incorporating push-to-open this handleless kitchen is extra sleek.

TRENDS Matt, black, concrete
MODEL Evia
COLOUR Ultra matt carbon

EYE-CATCHERS

- ✓ Worktop in concrete
- ✓ Sleek handleless design
- ✓ Spacious island with breakfast bar

Why not try this?

Do you prefer a handle trim or handle? No problem, as Keller offers so many choices in models and colours. Is a real concrete worktop a bit much? A laminate worktop with concrete print is warmer, easier to maintain and more affordable.



Interior style

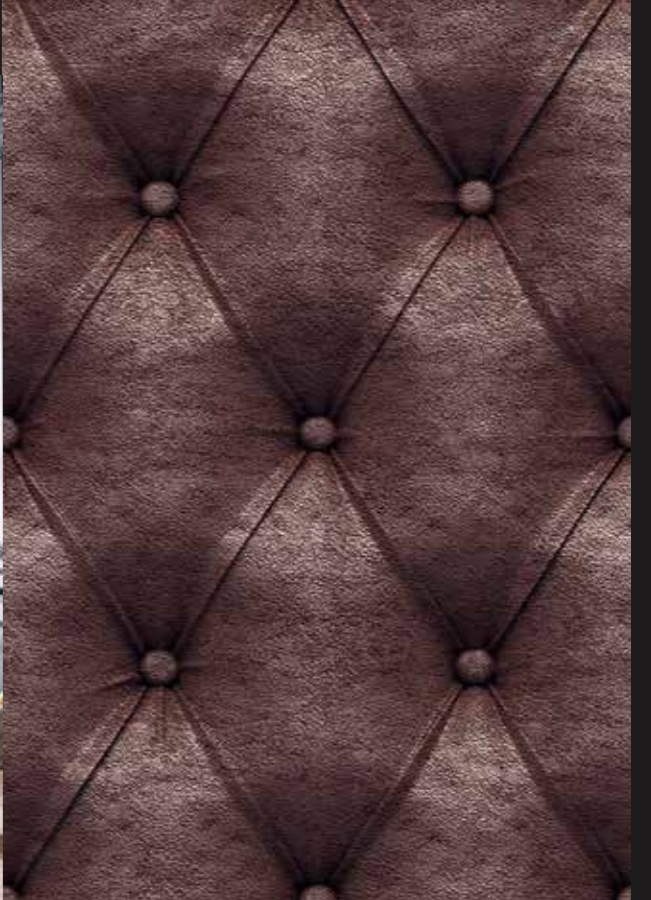
CLASSIC

The classic living style is majestic and elegant with rich materials and deep colour palettes. Characteristic are symmetrical lines, ornaments and elements such as columns, panelling, chandeliers, fireplaces and bookcases. The interior evokes a feeling of luxury and wealth.

Within this style we see different movements such as the boutique hotel style or influences from the early 20th century such as art deco. More and more modern-classic interiors in which classical elements are applied in a modern way today.

The furniture is spacious and comfortable, with materials such as luxurious leathers, dark wood and black lacquer playing a leading role. Accessories such as old tableware, heirlooms and special art objects emphasise the classic style. Dark tones predominate, commonly used materials are shiny fabrics, velvet, brass and copper. Old (glazed) tiles and herringbone parquet are also typical classic elements that are actually trendy again.





Interior style
CLASSIC





MARBLING MOODS

The materials in this modern-classic kitchen are reminiscent of styles from the last century. The combination of chic walnut, green fronts in matt lacquer and red copper accents give the kitchen a 'classy' retro touch.

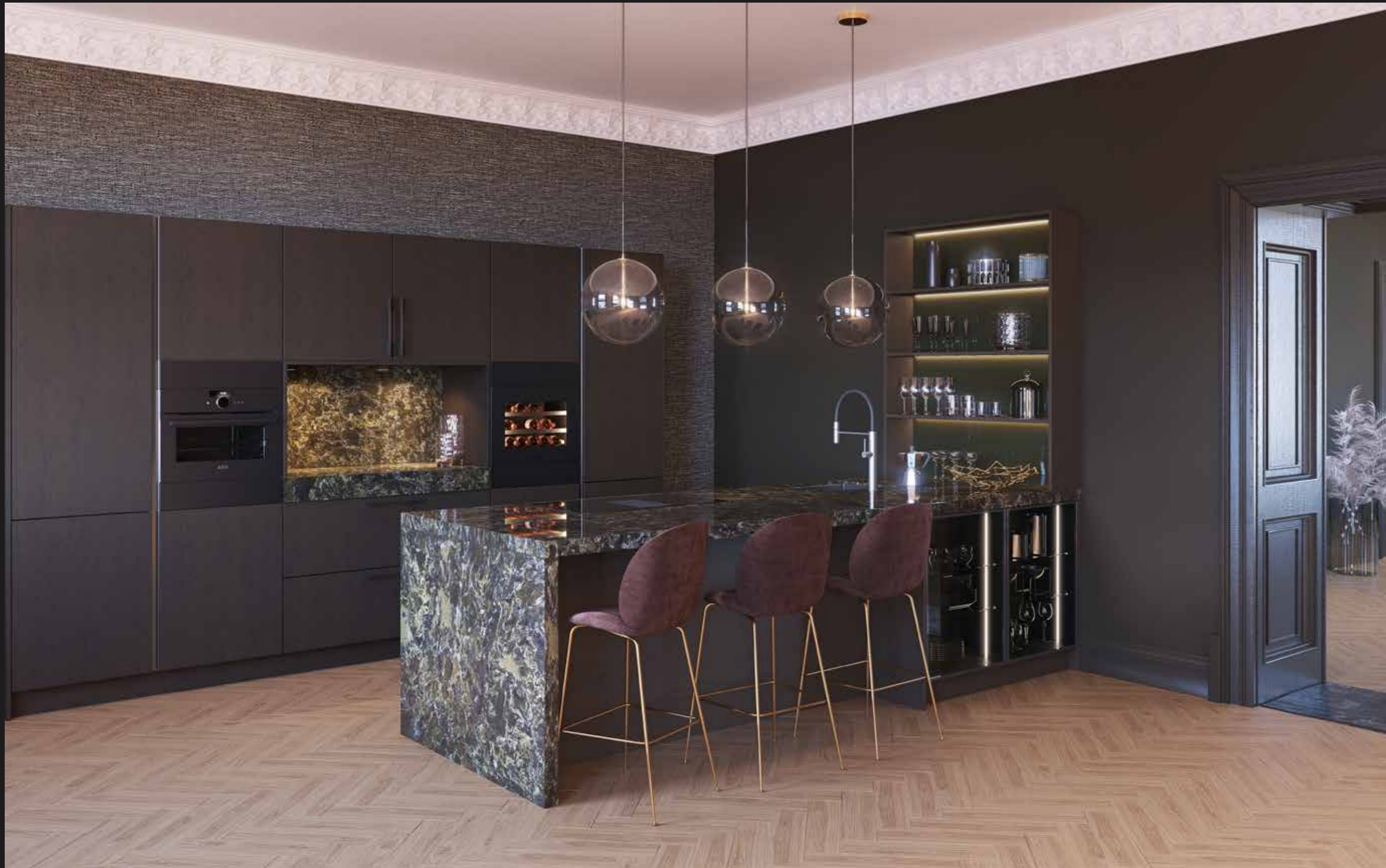
TRENDS	Floating cabinets, walnut, three tone kitchen
MODEL	Watford & crystal
COLOUR	Walnut veneer, ultra matt anthracite & matt lacquer in olive green

EYE-CATCHERS

- ✓ Floating cabinets
- ✓ Worktop and sink in composite marble look with green veins
- ✓ Red copper handle trim and water tap

Why not try this?

Replace the wood veneer front with a melamine door in wood decor. Looks just as real, but costs less.



GLAM CHIC

Enter the world of Glam Chic. Experience the style of a luxury hotel with classical elements incorporated in a modern way. Details like the glass units with smoked glass and LED lighting, the royal cooking island and the recess in composite make for a rich appearance.

TRENDS Boutique hotel-style, smoked glass, dark wood
MODEL Nottingham
COLOUR Stain brown oak

EYE-CATCHERS

- ✓ Glass units with smoked glass and LED lighting
- ✓ Veneered doors in brown oak stain
- ✓ Metallic handle trims in gun metal

Why not try this?

Replace the wooden doors with faux wood ones and you'll get a different price tag. The same happens when you replace the worktop with a synthetic one, which come in several thicknesses.





STURDY CLASSIC

Classical elements like the bookcase and the dark walls give this kitchen a sturdy feel. The same goes for the stone floor, raw wood and black stove.

TRENDS Warm wood, industrial accents
MODEL Elba
COLOUR ashed oak

EYE-CATCHERS

- ✓ Faux-wood in washed oak
- ✓ Fireplace in worktop
- ✓ Sturdy materials

Why not try this?

The melamine doors can also be replaced by veneered ones to make it more natural. Of course it does cost a bit more. By choosing a laminate worktop instead of real stone, you balance the budget without compromising on style.





BLISS BOUTIQUE

This design reflects the boutique hotel trend perfectly. Classic green, warm wood and cognac tones, combined with luxurious marble and gold accents characterise this glamorous style.

TRENDS Boutique hotel, decadent, metallic

MODEL Crystal & Cascada

COLOUR Silk gloss lacquer (NCS S 7005-B80G) & walnut

EYE-CATCHERS

- ✓ Handle trims in gold metallic
- ✓ Shaker door with faux walnut wood grain
- ✓ Luxurious water tap and sink in gold

Why not try this?

Classic dark blue, dark red or black and gold combined with warm wood and cognac colours. At Keller Kitchens, at no additional costs, you can choose any of the other 1,950 lacquer colours.





RAW NATURE

Bring the outdoors into your kitchen. With warm wood and a lot of green your kitchen will look truly exotic and natural. The tiles above the kitchen emphasise this effect. The matt black stove, cooker hood and lamp give the kitchen an industrial twist.

TRENDS Natural materials, urban jungle
MODEL Elba & Crystal
COLOUR Espresso oak & structured lacquer olive green

- EYE-CATCHERS**
- ✓ Warm faux wood front
 - ✓ Tall units in olive green lacquer
 - ✓ Kitchen tiles with graphic print

Why not try this?

Do you prefer natural products? Replace the faux wood grain melamine fronts with actual wood or veneer. And is olive green not your favourite colour? Then choose one of the other 1,950 lacquer colours that better fits your personal taste.





Interior style

COUNTRY

A country style interior breathes the atmosphere of the outdoors and incorporates many natural materials and botanicals. Inspired by charming holiday homes and cottages, the country style offers warmth, tranquility and cosiness.

The country style interior is becoming more and more modern, but will always have weathered objects with a soul and characteristic details. Furniture is robust, with (coarse) woods and materials like old beams and stone or wooden floors are popular.

It's characterised by the use of natural materials such as wood, stone, linen, wool and rattan. Naturally, we see natural and weathered colours while accessories such as cushions and plaids give the room a warm feel.



Interior style
COUNTRY





COTTAGE LIFE

Natural materials are trending. This is reflected in the linen-look fronts of the kitchen island and in the styling. The worktop and back wall are made of composite.

TRENDS	Natural materials, webbing, built-in cabinets
MODEL	Maine & Bronx
COLOUR	Dark grey oak & linen

EYE-CATCHERS

- ✓ Trendy linen-look drawer fronts in island
- ✓ Inside in colour 'mist'
- ✓ Deepened sink cabinets

Why not try this?

Instead of the solid wood front, choose a wood look front in melamine. Same look, different price tag. Prefer a different accent front? Choose one of the other striking decors from our TREND collection.



SMOKEY WOOD

The rough veneer with smoked oak stain gives this kitchen a rustic yet luxurious appearance. The handle trims in gun metal give it a modern finishing touch! The matching buffet really completes this spacious country kitchen.

TRENDS Coarse wood, rustic materials, smoked wood
MODEL Maine
COLOUR Stain smoked oak

EYE-CATCHERS

- ✓ Coarse veneer
- ✓ Bespoke buffet
- ✓ Worktop in natural stone with chiseled edge

Why not try this?

Finishing the veneered fronts in matt lacquer would make the kitchen even more exclusive. Choosing a synthetic worktop will compensate the price increase.



BOTANIC VINTAGE

Green is trending; as a colour as well as dotting plants around the home. So why not in your kitchen? A perfect match with country-style interiors.

TRENDS	British racing green, marble gold
MODEL	Nottingham & Moyland
COLOUR	Silk gloss lacquer dark green (NCS S 6530-G10Y) & structured lacquer charcoal

EYE-CATCHERS

- ✓ Grooved veneer fronts
- ✓ Golden water tap and sink
- ✓ Worktop and back wall in white marble

Why not try this?

The veneered doors are available with or without grooves. If you would like a more natural look, you can choose to finish the doors with one of our nine stains rather than black or green lacquer.





MODERN FARMHOUSE

Natural, rustic materials like wood and stone, used in a modern design. By using copper and matt black iron, some nostalgia was added. The kitchen's eye-catchers are the natural stone sink and custom canopy.

TRENDS	Sturdy wood, copper, rustic materials
MODEL	Maine
COLOUR	Grey oak stain

EYE-CATCHERS

- ✓ Coarse veneer with knots
- ✓ Canopy and pillars made from same material as kitchen fronts
- ✓ Granite worktop

Why not try this?

At Keller you can choose from a wide range of realistic faux wood grains rather than real wood. They're easier to maintain and less prone to damage, just like worktops.





BLACK COTTAGE

A true country style kitchen, but with an industrial touch. The sturdy lamps over the table and the grey plastered walls, together with a brick floor, form a perfect combination of rustic and industrial country living.

TRENDS Industrial details, black, copper

MODEL Sutton

COLOUR Structured lacquer charcoal (NCS S 9000-N)

EYE-CATCHERS

- ✓ Grooved fronts in wood veneer
- ✓ Composite worktop 80 mm thick
- ✓ Luxurious copper water tap with matching accessories

Why not try this?

Choosing a lacquered MDF door instead of lacquered veneer is more affordable. The same goes for choosing a laminate worktop over a stone one. Is black not really your colour? Then choose one of the other 1,950 NCS lacquer colours.





DUTCH PRESTIGE

Gray and (Delft) blue form the basis for a typical Dutch interior trend. The styling in Delft blue pottery and a 'Dutch Master' on the wall give it the finishing touch.

TRENDS Wood grains, Delft blue, Dutch Masters
MODEL Finsbury
COLOUR Silk gloss lacquer graphite

EYE-CATCHERS

- ✓ Worktop in faux wood grain synthetic
- ✓ Grooved doors
- ✓ Delft blue styling

Why not try this?

The Keller MASTER collection offers seven different finishes for the same colour, each with its own price tag. This way you can get the same look, but at a lower price.





OAK AGED

Natural materials like wood and stone are the main elements of this kitchen. Lay a (faux) fur on that rustic looking table to finish the look.

TRENDS Natural wood, dark accents and accessories
MODEL Leybourne
COLOUR Stain grey oak

EYE-CATCHERS

- ✓ Wooden kitchen with shaker doors
- ✓ Open cabinet on worktop
- ✓ Chimney in wood veneer

Why not try this?

Choosing a melamine front will make the kitchen more affordable without compromising on the main style. Would you rather have composite or natural stone worktop? No problem, although it is a little bit more expensive.





NATURAL BASIC

This kitchen is characterised by its natural wood and white colour tones. The sleek lines, the light composite worktop and the chairs give it a modern touch.

TRENDS Natural wood, light, grooved fronts.
MODEL Sutton
COLOUR Stain nature oak

EYE-CATCHERS

- ✓ Wood veneered front with groove
- ✓ Stain oak nature for a natural wood effect
- ✓ White composite worktop for a calm and natural touch

Why not try this?

Fitting the kitchen with faux wood melamine doors and a laminate worktop will make it more affordable. Want to add some colour? You can also choose to finish the doors in one of the 1,950 NCS colours





WOOD WORKS

Sober, raw wood accentuates the country style of this kitchen. The details add a modern twist. The glass cabinets have lighting inside and at the bottom.

TRENDS	Rough wood, black, industrial accents
MODEL	Winchester
COLOUR	Stain grey oak

EYE-CATCHERS

- ✓ The white stove emphasises the country style
- ✓ The white worktop contrasts nicely with the wooden fronts
- ✓ Two-tone kitchen

Why not try this?

The veneered doors can be replaced by synthetic ones. They almost look the same, but the kitchen is more affordable. Not quite the stove you are looking for? Our official Keller dealers have a wide range of alternatives you can choose from.

Interior style

INDUSTRIAL

The industrial style of living is reminiscent of old (factory) buildings or lofts. Construction details such as steel beams, concrete or brick are characteristic details in these types of design schemes. Robust and aged materials give this interior a sturdy touch.

Furniture is made of coarse woods and leathers, combined with greyish fabrics that provide a little softness. Accessories are often vintage objects - think of large industrial or factory lamps. The floors are often plain and subtle.

In contemporary homes, an industrial atmosphere can be created by floors and walls in a concrete look or photo wallpaper of concrete or brick.

The industrial colour palette is sober. White, black and all shades of grey in between. As an accent, a primary colour such as yellow or red is often added.





Interior style

INDUSTRIAL



DARK RITUALS

This loft-style kitchen is a real eye-catcher with the high bookcase placed over the island. The worktop covers part of the side of the island. The trendy accent fronts in Stainless Steel and the smart cubes in black complete the sturdy look!

TRENDS Weathered materials, black, metal, stone
MODEL Nottingham & Bolton
COLOUR Matt black oak stain & Stainless steel

- EYE-CATCHERS**
- ✓ Island with high bookcase and hood-in-hob
 - ✓ Back wall with composite tiles and smart cubes
 - ✓ Trendy accent front in Stainless Steel

Why not try this?

Don't have room for a large island? Choose a corner design or smaller island. We also have beautiful trend decors in concrete or stone look for an industrial style.





BROOKLYN BRICK

With its dark colours, rust-look worktop and brick wall, this kitchen is perfect for an industrial interior. The red vintage fridge adds the finishing touch!

TRENDS Rust, matt black, industrial

MODEL Crystal

COLOUR Structured lacquer charcoal (NCS S 9000-N)

EYE-CATCHERS

- ✓ Rust look worktop in ceramic 50 mm thick
- ✓ Red vintage refrigerator
- ✓ RVS-look plinth

Why not try this?

By choosing our ultra matt model rather than black lacquer, you get the same look but at a more affordable price. Just like when you choose a laminate worktop.





ROCK SOLID

Stone and steel form the basis of this hyper-industrial kitchen. The island is completely wrapped in ceramic. The graphite structured lacquered fronts and extractor in metal frame complete the picture.

TRENDS Open frames, metal, stone
MODEL Crystal
COLOUR Structured lacquer graphite

EYE-CATCHERS

- ✓ Sturdy recessed handles in base units
- ✓ Invisible induction hob
- ✓ Island completely wrapped in ceramic

Why not try this?

Is structured lacquer not matt enough?
All our 1,950 lacquer colours are also available in matt lacquer.





BLACK METAL

It's the latest kitchen trend: an industrial look, dark colours, cool metal and stone. The grey floor and raw concrete-look wall form the perfect basis.

TRENDS Raw materials, black, metal, stone

MODEL Bolton

COLOUR Metal black

EYE-CATCHERS

- ✓ Sink and water tap in Gun Metal
- ✓ Welded smartcubes
- ✓ Fronts in realistic metal-look

Why not try this?

The welded open frames are also available in a sleeker, black steel version. For a different sturdy look, choose concrete or stone-look.



CONCRETE JUNGLE

This industrial loft uses concrete, wood, fabric and leather as a base. The melamine fronts have an old oak look to give the kitchen warmth. The trend colour Midnight Blue keeps it cool though. The blackboard with a handwritten message gives this industrial kitchen its personal touch.

TRENDS Concrete (look), dark blue, metal

MODEL Elba & Crystal

COLOUR Old oak & structured lacquer Midnight Blue
(NCS S 8010-R90B)

EYE-CATCHERS

- ✓ Cabinets and casing panels in Midnight Blue
- ✓ A warm touch added by the old oak fronts
- ✓ The concrete look worktop

Why not try this?

Not a big fan of dark blue? No problem. With Keller Kitchens you can choose from 1,950 different NCS lacquer colours so you are sure to find one that you will love.





MADE IN HOLLAND

Keller has been making kitchens from its own factory for more than 85 years. Opting for a Keller kitchen is opting for Dutch craftsmanship and quality. You can be sure of a product that is produced with care and attention for people and the environment. Keller delivers Dutch design all over the world.

BEAUTIFUL ON THE OUTSIDE

Making a kitchen personal is easy with Keller. We have so many models, finishes and colours that you will always succeed in creating a beautiful kitchen. We have different models in various colours and finishes for all interior styles.

With the Keller range making a personal kitchen is easy. We have an extensive range of models, finishes and colours so you'll always find something you love. For every interior style, we have several models in a variety of colours and finishes. Always with an eye on the latest trends.

Visit one of our official dealers to see and experience the endless possibilities.

READ MORE ABOUT
OUR KITCHEN FEATURES



WOOD

Wood is beautiful, warm and versatile and is widely used in contemporary kitchens and interiors. Keller has a wide range of wood and wood veneers in sleek and shaker models with options for coarse or fine wood structures. For the finish, you can choose from nine stain colours and no fewer than 1,950 lacquer colours in matt, structured and satin lacquer.

XXL-CABINETS & GRID 130

One of the latest kitchen trends is a low plinth for a beautiful, sleek design. Our XXL-cabinet allows you to apply a lower plinth without changing the working height. How does it work? Keller kitchens are produced according to the Grid 130 dimensions, whereby the horizontal dimensions are made up of multiples of 130 mm. The new XXL-cabinet is half a grid size higher than the regular programme: 780 mm + 65 mm = 845 mm. With a plinth height of 70 mm, the working height remains the same.

Additional advantage: it also provides more storage space and an optimised working height!

HANDLELESS; HORIZONTALLY & VERTICALLY

When it comes to appearance, the devil is in the details. That's why Keller's handleless kitchens are handleless in every way. Not only horizontally, but also vertically. This way, the minimalistic effect you're aiming for is in no way compromised. The result is sleek, pure and completely contemporary.



OPTIONS & ACCESSORIES

Our wide range of cabinets and cabinet layouts offers endless possibilities in kitchen setups and designs. In addition to our collection of base units, high units and wall units, there are options to create open units or regals.

The smart frames and open regals in sleek black or sturdy welded metal are really trendy. This makes it possible to create attractive wall elements or open cabinets, with shelves or sliding doors.

There are also elements that can be mounted between the lower and upper cabinets and on which kitchen accessories can be hung.

Moreover, we offer various attractive solutions for the arrangement of (pan) drawers that will help you keep your kitchen beautiful and organised on the inside as well.



QUALITY & WARRANTY

At Keller, beauty and quality go hand in hand. A long lifespan and carefree use of your kitchen are standard in each Keller kitchen.

We give you a five-year unconditional factory warranty on all kitchen furniture. That means that if the quality or finish doesn't live up to our standard, or a part doesn't function as it should, we'll repair or replace it free of charge.

AFFORDABLE CUSTOMISATION

With our balanced kitchen range as a base, we can fulfil almost any personal wish you may have. A bespoke fitted kitchen also means one which fits your budget. We do this by offering options. Options in materials, more expensive or cheaper, but always without compromising the kitchen's design. Our extensive range of materials and finishes makes sure we can always find a solution in any price group. A comforting thought for those seeking the balance between beauty and price.

HAVE A LOOK AT OUR RANGE OF MODELS AND COLOURS



HANDLES

Do you opt for handleless, handle trims or handles? A combination of two or all three is also possible. These are the elements that give the kitchen design a real personal touch.

We have a very extensive handle collection with a wide choice for every taste and interior style.

HAVE A LOOK AT OUR HANDLE COLLECTION



BEAUTIFUL ON THE INSIDE

Keller kitchens are not only beautiful on the outside, but also on the inside. Durability and carefree use of the kitchen are key to a Keller design. Whether it's the extra thick 16 mm quality of the doors and cabinets, the silent soft close in hinges and drawer runners, or the high-quality hinges: Keller only works with the best materials.

Our choice for cabinet interiors makes it possible to choose a kitchen that is perfect for you in terms of layout and appearance on the inside.

HINGES

Keller kitchens are equipped with top quality hinges with integrated soft-close technology for silent and smooth closing operation.

Valve units can (optionally) be equipped with electrical opening support (servo-drive). Pressing lightly is enough to open these doors automatically. The BLUMOTION technology ensures soft and silent closing.



INTERIORS

You can also choose from many beautiful cabinet interiors for the cabinet layout. With our range you can also completely personalise the inside.

Choose the storage systems that fit your needs. Some examples:

- ✓ storage units with a range of options for shelves and (pan) drawers
- ✓ corner base units with swing-out shelves
- ✓ Le Mans swing-out shelves
- ✓ Dispensa swing baskets
- ✓ drawer interiors and inserts
- ✓ built-in waste systems

BEAUTIFUL LIGHTING

A good lighting plan not only ensures that you can work comfortably, but it also creates extra atmosphere even when the kitchen is not in use. Beautiful lighting is the finishing touch to your kitchen.

There are plenty of lighting options you can choose for your Keller kitchen and, because all our lighting is LED-based, it is not only beautiful, but also energy-efficient and therefore sustainable.

TYPES OF LIGHTING FOR YOUR KITCHEN

For wall units:

- ✓ surface and recessed spotlights
- ✓ lighting strips
- ✓ lighting bases
- ✓ spots for glass shelves

For base units:

- ✓ surface and recessed spotlights
- ✓ spots for glass shelves
- ✓ strip lighting for glass cabinets
- ✓ handle trim lighting
- ✓ (pan) drawer lighting



(PAN) DRAWERS

Keller kitchens are equipped as standard with the Antaro drawer system which features soft-close technology. The drawers are supplied with a non-slip mat and glass sideboxes. The colour of the drawers matches the carcass inside: light grey for carcass inside in white or mist and anthracite for carcass inside in graphite.

Want even more luxury and design? Then the Merivo drawer system is an option. This drawer box is distinguished by its improved running properties and stability. The design is also unique. The full metal sides give your cabinet interior an even more modern, sleek design. Beautiful dividers and lighting add the finishing touch.



INSIDE IN COLOUR

Want to go a step further in designing your personal kitchen? No matter which model or colour you choose, Keller offers the choice of three interior colours. Not only the inside of the cabinet, but also its shelves and the bottoms of (pan) drawers will be provided in the chosen colour. You can choose from the following colours: white, mist and graphite.



WASTE SYSTEMS

Separating waste becomes easy with our waste systems. We offer solutions for a built-in waste bin and/or extensive systems for separating waste. You choose what suits you. Ask your Keller kitchen specialist about the possibilities.



CHOICES IN COLOUR

The choice of colours in your interior and kitchen is also very personal. We offer a wide range of colours and decors in our range of fronts. Whether you like neutral or bold, trendy or timeless, natural or primary colours, everything is possible.

A kitchen in two or even three front colours? So-called two-tone or three-tone kitchens are all the rage right now. Choose two (or three) beautiful matching or contrasting fronts. Or apply a subtle accent with an accent front. The sky's the limit.

You will buy a Keller kitchen which will last for years, so think carefully about your choice of colour. Choose a neutral or timeless colour if you are more conservative in your interior.

Do you like to follow the latest trends? Then you can choose to combine walls and home accessories in trendy colours, so that you can quickly and easily adapt them to new trends.

The choice does not stop at the fronts and visible sides of the cabinets. For the inside you can choose from three colours and you can also choose grip strips in no fewer than 1,950 lacquer colours and five metallic hues.



1,950 NCS LACQUER COLOURS

All lacquered models are available in no less than 1,950 different NCS colours. It is possible to have your entire kitchen, or just a detail, in one of these hues that are available in matt, structured, satin and high-gloss lacquer. We only work with water-based lacquer, so there is no harmful emission of solvents.



HANDLE TRIMS IN COLOUR

To make your handleless kitchen truly personal, our handle trims are available in 1,950 colours in satin gloss lacquer and our five metallic lacquer hues: gold, copper, bronze, titanium and gun metal.

KELLER COLOUR CONCEPT

The Keller Colour System is a kitchen concept in which all our models, colours, materials and finishes are clearly and comprehensively arranged in three collections:

MASTER collection

The Keller MASTER collection consists of nine modern uni-colours which are available in seven different finishes. Besides this, the range has matching carcass and plinth colours. Because every model is available in these nine colours, you can choose any front in a more favourably priced material without colour difference.

COMFORT collection

The Keller COMFORT collection is our most extensive range. To give your kitchen that "personal touch" you can choose from 1,950 matt, structured, silk gloss and high gloss lacquers.

TREND collection

The Keller TREND collection is a modern contemporary colour range.

HAVE A LOOK AT OUR
COLOUR COLLECTIONS



INTERIOR IN COLOUR

In addition to white, you can have the insides of the carcass finished in the colours mist and graphite. The cabinet interior fittings such as swing out shelves, apothecary cabinets and drawers will also be matched to the colour of the inside of the carcass and finished in light grey or anthracite. This will turn your kitchen furniture into real design furniture.

MATERIALS AND FINISHES

Our product range makes it possible to put together your personal dream kitchen within your budget, without ever compromising on design and appearance.

On this page we show how the price of your kitchen changes when you start playing with materials and finishes. Often several materials are used in a kitchen design, this influences the price range. The type of cabinet, its layout and interior, water tap and sink also determine the price tag.

By making smart choices, your ultimate kitchen will always fit within your budget.

PRICE LEVEL INDICATOR

+

(MDF) HIGH GLOSS LACQUERED

SOLID WOOD LACQUERED/STAINED

WOOD VENEER LACQUERED/STAINED

(MDF) LACQUERED

ULTRA MATT SYNTHETIC

HIGH GLOSS SYNTHETIC

FOIL WRAPPED

MELAMINE

-

CHECK OUT OUR
MODELS AND FINISHES



WORKTOPS

Like kitchen materials, when it comes to worktops there's also a lot to choose from and all come with different price tags. Each material has different characteristics with its own advantages and disadvantages.

The worktop material can also be used as a back wall, or to 'wrap' a kitchen island.

Do you have a particular kitchen style in mind? Then there are always several worktop materials that match your taste and requirements. This way you can stay within your budget and still create your very own personal kitchen. We talk about the most frequently chosen materials here, but this is certainly not a complete overview. The Keller kitchen specialist will be happy to inform you about the materials that suit you, your interior style, budget and personal situation.

LAMINATE & SYNTHETIC

Available in an endless amount of colours, prints, thicknesses and strengths. The prints come in all shapes and sizes. Plain, fantasy prints or faux wood grain, stone or metal prints that look and feel like the real thing.

Advantage: a friendly price range and these worktops are less sensitive than real wood or natural stone.

WOOD

Worktops made from solid wood have a natural and warm appearance; but are also porous and sensitive to scratches.

STAINLESS STEEL

Durable, heat resistant and hygienic. They go perfectly with sleek, modern and industrial kitchens.



NATURAL STONE

A natural stone worktop is durable and unique because no slab is the same. What you get is a beautiful, robust appearance but be careful. Depending on the type of stone they are more porous and sensitive to scratches.

COMPOSITE

Composite consists of a mix of quartz, minerals, binding resin and pigments. This combination ensures that the top is more resistant to acids, and it is also less porous than, for example, granite. Various colours and structures are available.

CERAMIC & DEKTON

These blades are heat- and wear-resistant, stain-free and low-maintenance. Various prints and decors are also possible in these materials. These tops, however, are more susceptible to impact damage at the edges.

SOLID SURFACE

This material is virtually impermeable and minor scratches are easy to repair. In contrast to laminate, this synthetic top is solid and homogeneous, which means that each worktop can be fully customized and moulded into any desired shape, including round shapes!

FENIX NTM®

Fenix NTM® is a kitchen worktop incorporating special nanotechnology that offers various advantages. The material is extremely matt, has a soft touch and a surprising bonus of being anti-fingerprint. In combination with our kitchen fronts in Fenix, beautiful tone-on-tone kitchen designs can be designed.





APPLIANCES AND ACCESSORIES

The choice of equipment is huge and trends change quickly. Induction hobs and stoves are on the rise, especially now that homes are increasingly being built without a gas connection. Steam ovens, wine coolers and hood-in-hob are also gaining in popularity.

The wat tap and sink determine the appearance of the 'wet' part of your kitchen. Again, there is a choice of many types, models and colours. Choosing a two-handle or one-handle water tap used to be about the only choice you had when it came to accessories. Today, you can opt for a warm water tap, a 3-in-1 tap, or even a sparkling water tap. And they come in all shapes, sizes and colours.

When you consult our Keller kitchen specialists it will all be reviewed. These experts offer the best and most current appliances and accessories on the market, for any budget. They are well informed about all the advantages and disadvantages they bring and know the upcoming trends. They will review all possibilities with you to truly make your new kitchen a personal kitchen which you can enjoy for years to come.





Corporate Social Responsibility

SUSTAINABILITY

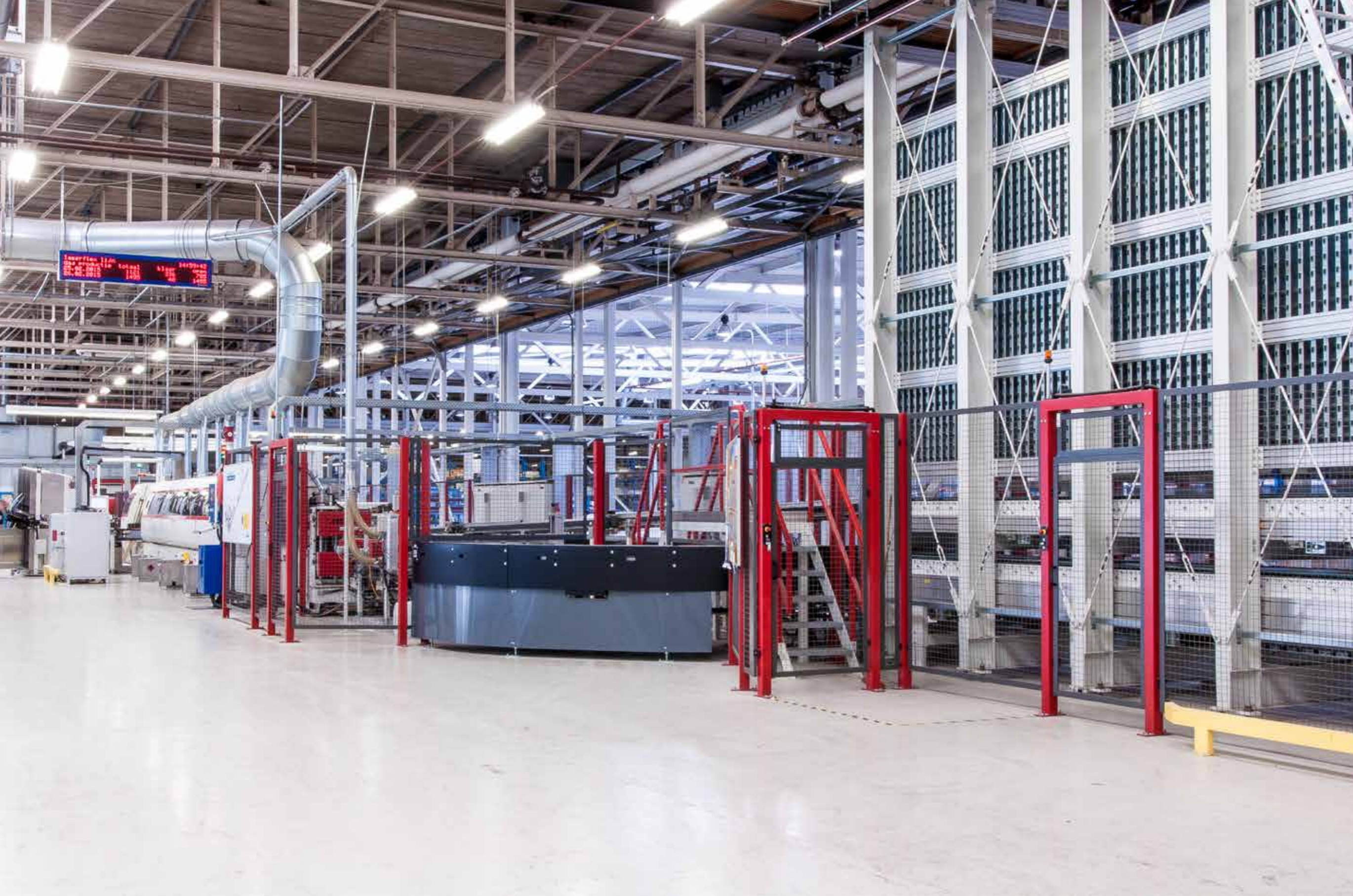
Corporate Social Responsibility, CSR in short, is an important spearhead for Keller Kitchens. Our activities as a company have an effect on people and the environment. We take this into account in all choices we make. This also applies to this brochure, the paper meets all environmental requirements for printing.

Over the past decades, we have developed an ambitious sustainability strategy, with results. For example, our kitchens have been produced Carbon-neutrally since 2017 and we have obtained various certifications according to the highest standards. It doesn't stop here. We are continually looking for new, innovative ways to make our products and processes even more sustainable. On our website you can read more about our initiatives, achieved results and objectives for the future.



[READ MORE ABOUT OUR CSR-POLICY](#)





THE FACTORY

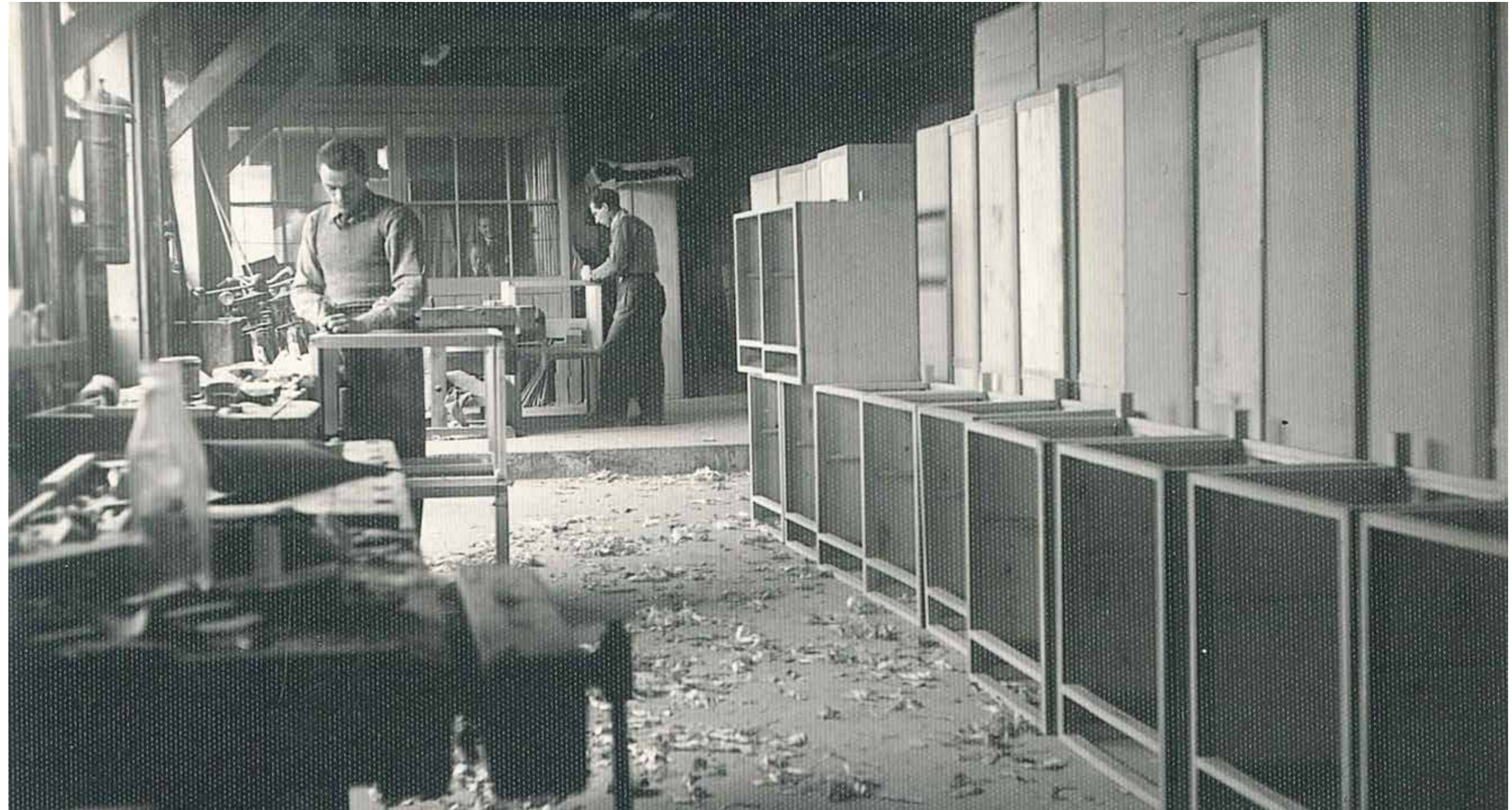
With a surface area of 56,000 m², our factory in Bergen op Zoom is one of the largest in Europe. In order to provide our customers with a real quality product, we only use the latest technologies and first-class materials. After all, a beautiful kitchen should last for years.

Our production process is carbon neutral. The 1.950 different NCS lacquer colours are perfectly applied in our fully automated spray paint installation. We only work with water-based lacquers. As a result, there is no harmful emission of solvents. This results in a healthier (working) environment.

HISTORY

In 1935, Gerard and Henk Keller, sons of a Rotterdam carpenter, started a company which made parquet floors. Forced by scarcity, they also started making kitchens during the war. They won an order for 1,000 kitchens from a large building company in 1946.

Craftsmanship, design, a good price and their personal way of doing business were key for this agreement. Herewith the foundation for our current way of doing business and our position at the top of the Dutch kitchen market were laid.







keller

www.kellerkitchens.com